

C4D-2GEUAB_V6 INSTALLATION GUIDE

05/10/2019



Table of contents

Preface.....	3
Warnings and notices	3
1. Hardware features	4
2. Hardware description.....	5
2.1. External view.....	5
2.2. Internal view.....	5
2.3. OBD connector pin out	5
2.4 OBD adapter wires.....	6
3. Preparing/installing the device	7
3.1. Open the device to insert a SIM card.....	7
3.2. Properly close the device	8
3.3. Install the OBD Dongle	10
4. LED sequences	10
5. Support	10

Preface

The information contained in this installation guide is subject to changes in order to improve the reliability, design or features without prior notice. Mobile Devices Ingénierie reserves the right to make changes in the content without obligation to notify any person or organisation of such changes or improvements. Mobile Devices Ingénierie can in no event be held liable for technical or editorial errors or omissions herein, nor for incidental, special or consequential damages from the furnishing, performance or use of this installation guide.

Please contact our technical support for current updates and supplemental information concerning the use and operation of this or other Mobile Devices Ingénierie products.

Warnings and notices



The exclamation point within an equilateral triangle is intended to alert the user to the presence of important operating and maintenance (servicing) instructions in the literature accompanying the product.

Please read the installation guidelines, as well as the safety and operating instructions before operating your device. Follow all instructions and heed all warnings in the installation guide.

There is a risk of explosion if the battery is replaced by a wrong battery type. Please discard empty battery according to local regulations.

This Device meets the government's requirements for exposure to radio waves. The guidelines are based on standards that were developed by independent scientific organizations through periodic and thorough evaluation of scientific studies. The standards include a substantial safety margin designed to assure the safety of all persons regardless of age or health.

CE RF Exposure Information and Statement The SAR limit is 2.0 W/kg averaged over one gram of tissue. The highest SAR value reported under this standard during product certification for use close to human body is 1.18W/kg. This device was tested for typical body operations at 0.5cm from the body. The use of accessories that do not satisfy these requirements may not comply with FCC RF exposure requirements, and should be avoided.

Body Operation

This device was tested for typical body support operations. To comply with RF exposure requirements, a minimum separation distance of 0.5 cm must be maintained between the user's body and the device, including the antenna. Third-party belt-clips, holsters, and similar accessories used by this device should not contain any metallic components. Body accessories that do not meet these requirements may not comply with RF exposure requirements and should be avoided. Use only the supplied or an approved antenna.

1. Hardware features

OBD Dongle		
Performance	Processor	Atmel SAMA5 - 500MHz
	RAM	128 Mbytes
	NAND Flash	256 Mbytes
Power supply	External power supply 8-18V	•
	External voltage measurement	•
	Li-pol battery	450mA.h
Communication	Modem	2G QUAD Data module (u-blox SARA-G450)
	GSM antenna	Internal
	GPS receiver	u-blox UBX-M8030-KT-B3000A
Positioning	GPS antenna	Internal
	Micro USB (2.0 Host/Device) (not powered on internal battery)	powered (limited to 500 mA on 5V) when connected to external power
	3D Accelerometer	±2g/±4g/±6g/±8g/±16g
Interface & Telematics features	LED	A two-coloured LED (controlled by software)
	OBD protocols	CAN, ISO 9141-2, J1850-PWM, J1850-VPW
	Additional CAN interface	Single Wire CAN
Environmental	Connectors	OBD connector Micro USB
	Operating temperature *	-25/+60°C (without battery) -25/+55°C (with battery)
	Dimensions	With OBD connector: 27x60,5x49,5 mm Without OBD connector: 27x48x49,5 mm"
	SIM card	Slot
RF Specification	GSM GPS(Rx)	GSM900:33dBm GSM1800:30dBm

* Please read warnings section at the beginning of the installation guide

2. Hardware description

2.1. External view

1. ODB connector
2. microUSB connector
3. LED



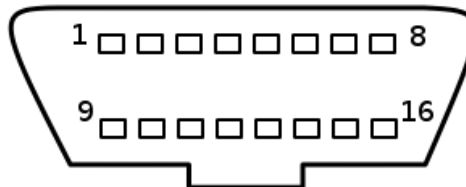
2.2. Internal view

4. GSM antenna
5. GPS antenna
6. SIM holder
7. Internal battery*



2.3. OBD connector pin out

Pin #	Comment
1	Single-Wire CAN (optional)
2	J1850+ (PWM/VPW)
3	CAN2 High (optional)
4	Chassis ground
5	Signal ground
6	CAN1 High
7	K line
8	CAN2 Low (Multiplexed with pin 11) (optional)
10	J1850- (PWM)
11	CAN2 Low (Multiplexed with pin 8) (optional)
14	CAN1 Low
15	L line
16	Battery voltage



* Please read warnings section at the beginning of the installation guide

2.4. OBD adapter wires

This adapter is only used to connect the OBD to a computer (laptop/desktop).

Pin #	Wire color
2	Yellow
4	Black
5	Grey
6	Green
7	Blue
10	Violet
14	Orange
15	White
16	Red



3. Preparing/installing the device

3.1. Open the device to insert a SIM card

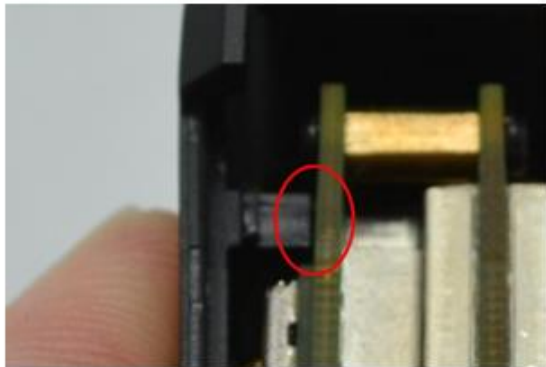
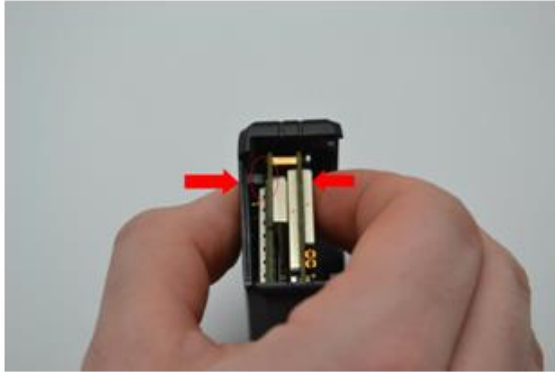


The SIM card PIN must be deactivated

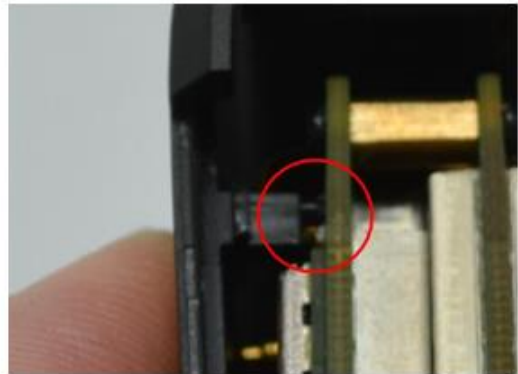


3.2. Properly close the device

First, check that the hole of the electronic card is correctly inserted in the plastic part. If it's not inserted proceed as shown below.



GOOD

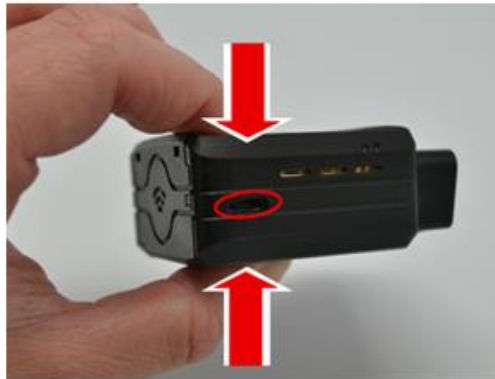


NOT GOOD

Second, insert the GPS antenna as shown below.



Third, check that the micro USB port is correctly inserted on its place.
If it's not inserted proceed as shown below.



GOOD



NOT GOOD

Finally, insert the battery and place the screw.



3.3. Install the OBD Dongle

Connect the OBD Dongle on your vehicle OBD connector.

4. LED sequences

The Dongle has a two-coloured LED, green and red.
When both colours are brightened, you can see an orange light.

Red LED		Green LED	
Sequence	Meaning	Sequence	Meaning
OFF	Dongle OFF		
ON	Ext. Power/Run	3 times (50ms ON/100ms OFF) 3550ms OFF	No GPRS/No GPS
		2 times (50ms ON/100ms OFF) 3700ms OFF	No GPRS/Fix GPS
		1 time (50ms ON/100ms OFF) 3850ms OFF	GPRS OK/No GPS
		2000ms ON 2000ms OFF	GPRS OK/Fix GPS
30ms ON / 1 s OFF	Shutdown		
10ms ON / 2 s OFF	Idle/Sleep and Shutdown		

5. Support

For all questions not related in this installation guide, please contact the support team by email at support@mobile-devices.fr