

C4D-4MEUAD_V6 - INSTALLATION GUIDE

21/05/2019



Table of contents

Preface.....	3
Warnings and notices	3
1. Hardware features	4
2. Hardware description.....	5
2.1. External view.....	5
2.2. Internal view.....	5
* Please read warnings section at the beginning of the installation guide.....	5
2.3 OBD connector pin out	6
3. Preparing/installing the device	7
3.1. Open the device to insert a SIM card.....	7
3.2. Properly close the device	8
3.3. Install the OBD Dongle	10
4. LED sequences	10
5. Support	10

Preface

The information contained in this installation guide is subject to changes in order to improve the reliability, design or features without prior notice. Mobile Devices Ingénierie reserves the right to make changes in the content without obligation to notify any person or organisation of such changes or improvements. Mobile Devices Ingénierie can in no event be held liable for technical or editorial errors or omissions herein, nor for incidental, special or consequential damages from the furnishing, performance or use of this installation guide.

Please contact our technical support for current updates and supplemental information concerning the use and operation of this or other Mobile Devices Ingénierie products.

Warnings and notices



The exclamation point within an equilateral triangle is intended to alert the user to the presence of important operating and maintenance (servicing) instructions in the literature accompanying the product.

Please read the installation guidelines, as well as the safety and operating instructions before operating your device. Follow all instructions and heed all warnings in the installation guide.

There is a risk of explosion if the battery is replaced by a wrong battery type. Please discard empty battery according to local regulations.

Hereby, Mobile Devices Ingénierie declares that the radio equipment type C4D-4GMEUAB_V6 is in compliance with Directive 2014/53/EU. The full text of the EU declaration of conformity is available at the following internet address: <http://www.mobile-devices.com/>

The device could be used with a separation distance of X.Xcm to the human body. Users have to adopt a holster/sleeve/cover without any metal components to maintain this distance.

Dispose of used batteries according to the instructions.

RF Exposure Information (SAR)

For this device, the highest reported SAR value for usage near the body is **X.XXX** W/kg.

According to REDCA Technical Guidance on the publication with a restriction in the Official Journal of Europe of the reference of standard EN 50566:2017, ensuring the safe a **separation distance of Xmm** or less is applied for handled device and body-mounted wireless communication device used by the general public, the 5mm distance is used for SAR testing and this device is compliance with Specific Absorption Rate (SAR) for general population/uncontrolled exposure (Localized 10-gram SAR for head and trunk, limit : 2.0W/kg) specified in Council Recommendation 1999/519/EC, and ICNIRP Guidelines, and RED (Directive 2014/53/EU), and had been tested in accordance with the measurement methods and procedures specified in EN50566:2017, EN62311:2008 and EN62209-2:2010

1. Hardware features

OBD Dongle		
Performance	Processor	Cortex A5 - 500MHz
	RAM	128 Mbytes
	NAND Flash	256 Mbytes
Power supply	External power supply range	8-18V
	External voltage measurement	•
	Li-pol battery	450mA.h
Communication	Modem	4G Cat-M1 data module (SARA R410M-52B)
	Modem antenna	Internal
Positioning	GNSS receiver	U-blox M8 (GPS, GLONASS, BeiDou)
	GNSS antenna	Internal
Interface & Telematics features	USB (2.0 Host)	powered (100mA on 5V minimum) optional
	3D Accelerometer	±2g, ±4g, ±6g, ±8g, ±16g
	OBD protocols	CAN, KWP2000, VPW, PWM
Environmental	Connectors	OBD connector
		Mini USB
	Operating temperature *	-25/+60°C
	Dimensions	With OBD connector: 27x60,5x49,5 mm Without OBD connector: 27x48x49,5 mm
	SIM card	slot

* Please read warnings section at the beginning of the installation guide

2. Hardware description

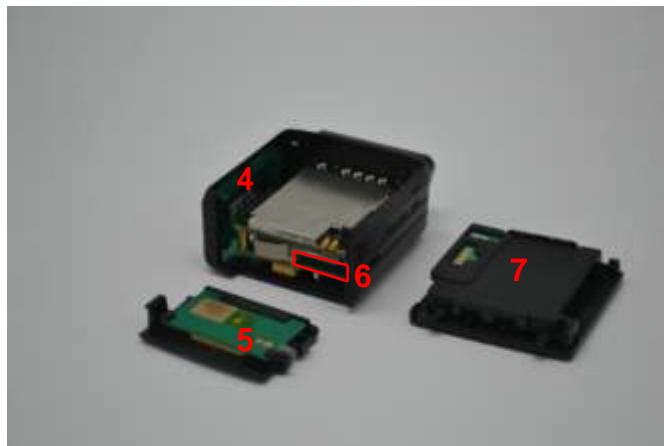
2.1. External view

1. ODB connector
2. microUSB connector
3. LED



2.2. Internal view

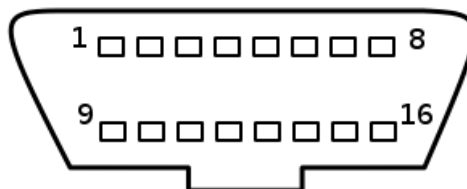
4. Modem antenna
5. GNSS antenna
6. SIM holder
7. Internal battery*



* Please read warnings section at the beginning of the installation guide

2.3 OBD connector pin out

Pin #	Comment
2	J1850+ (PWM/VPW)
4	Chassis ground
5	Signal ground
6	CAN High
7	K line
10	J1850- (PWM)
14	CAN low
15	L line
16	Battery voltage



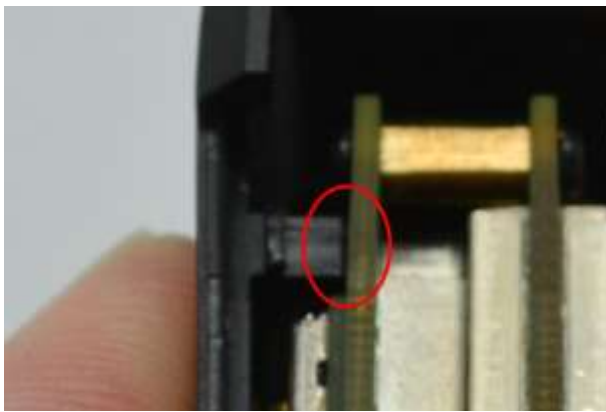
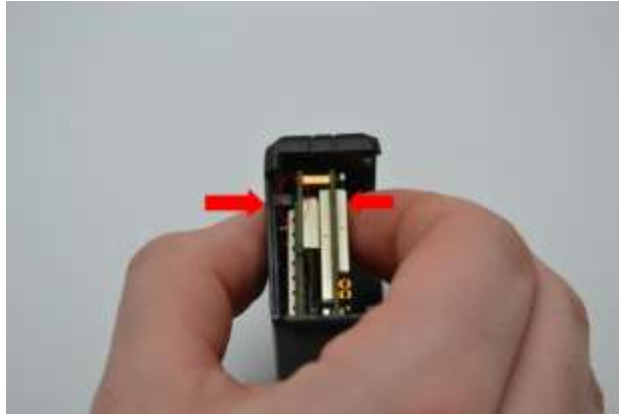
3. Preparing/installing the device

3.1. Open the device to insert a SIM card

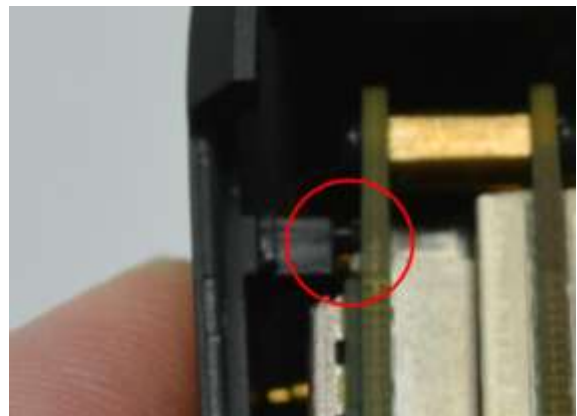


3.2. Properly close the device

First, check that the hole of the electronic card is correctly inserted in the plastic part.
If it's not inserted proceed as shown below.



GOOD

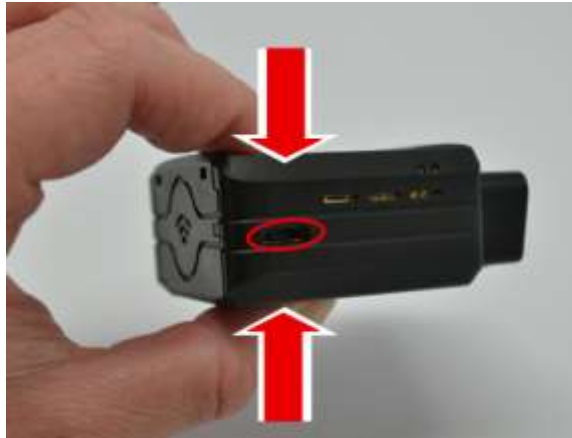


NOT GOOD

Second, insert the GPS antenna as shown below.



Third, check that the micro USB port is correctly inserted on its place.
If it's not inserted proceed as shown below.



GOOD



NOT GOOD

Finally, insert the battery and place the screw.



3.3. Install the OBD Dongle

Connect the OBD Dongle on your vehicle OBD connector.

4. LED sequences

The Dongle has a two-coloured LED, green and red.
When both colours are brightened, you can see an orange light.

Green LED		Red LED	
Sequence	Meaning	Sequence	Meaning
		Dongle OFF	OFF
No Modem /No GNSS	3 times (50ms ON/100ms OFF) 3550ms OFF	Ext. Power/Run	ON
No Modem /Fix GNSS	2 times (50ms ON/100ms OFF) 3700ms OFF		
Modem OK /No GNSS	1 time (50ms ON/100ms OFF) 3850ms OFF		
Modem OK /Fix GNSS	2000ms ON 2000ms OFF		
		Shutdown/Hibernate	30ms ON / 1 s OFF
		Idle/Sleep	30ms ON / 1 s OFF

5. Support

For all questions not related in this installation guide, please contact the support team by email at support@mobile-devices.fr